



Pale Blue Stitch



Download more free patterns, watch our tips and tricks videos, share photos of your work, and purchase yarn kits at: www.KnitTheSky.com

As an astronomer, host of the “Cosmos” TV series, and a writer of many lovely words about the human place in the universe, Carl Sagan made the seemingly endless void of space and time accessible to all of us. As the Voyager 1 space probe approached the end of its mission in 1990, Carl Sagan asked NASA to point the camera back at Earth for one last photo. At a distance of four billion miles, our tiny, fragile, and special home appears as nothing more than a pale blue dot. Pale Blue Stitch is inspired by this famous photo and the closely related idea of a cosmic calendar, also popularized by Carl Sagan.

The cosmic calendar is a visualization tool that maps the history of the universe onto a single calendar year. In this unique pattern for a 5½ foot long scarf, Sagan’s calendar is translated into a linear timeline for your knitting enjoyment and philosophical inspiration. Thin stripes in many colors mark significant moments in the history of the universe and life on Earth. Each and every stitch represents 400,000 years, and you won’t mark the presence of human beings until the last few stitches!

Yarn: 51% silk, 49% merino wool, 100g - 785 yards of black, with smaller lengths of dark blue and fifteen other colors.

Needles & Gauge: Size 3 straight needles. Knitting in garter stitch, you will have a gauge of about 7½ stitches per inch. Make a swatch to test your gauge and adjust your needle size if necessary. Finished scarf size is 6½ inches wide by 5½ feet long.

Instructions: To make a hand knit cosmic calendar, simply follow the guide at right to mark each significant moment in the timeline with a thin stripe of color. To begin, cast on 48 stitches in black. Then use stranded colorwork to create the optional “BIG BANG” text block by following the grid on the reverse side of this page. If you choose to skip this part, simply continue knitting plain garter stitch in pure black for rows 5-19. Throughout the scarf, whenever you arrive at the row numbers for a new colorful stripe, simply let go of the black yarn, pick up the appropriate color yarn, and knit 2 rows in garter stitch. Then simply let go of the tail of the colored yarn, pick up the black yarn again, and continue as before. You’ll notice that the very last “stripe” is actually a “pale blue dot” instead. This represents the portion of time that human beings have existed. Only two stitches per row on these final two rows will be blue. The rest will be black. Switch yarns in the same way as before even though you’re not yet to the edge of the scarf. Finally, weave in all the loose ends. Note: Row 729, as shown in the color chart, is also the cast off row.

Tip #1: Place a stitch marker in your work every 100 rows (equal to 50 garter ridges) so you can keep track of when to knit each colored stripe.

Tip #2: When weaving in the loose ends, be sure to weave them in along the colorful stripes so they blend in nicely. You don’t want them to show through the otherwise black background zones.

Knit The Sky patterns are designed by Lea Redmond and Knit The Sky yarn kits are produced by Leafcutter Designs.

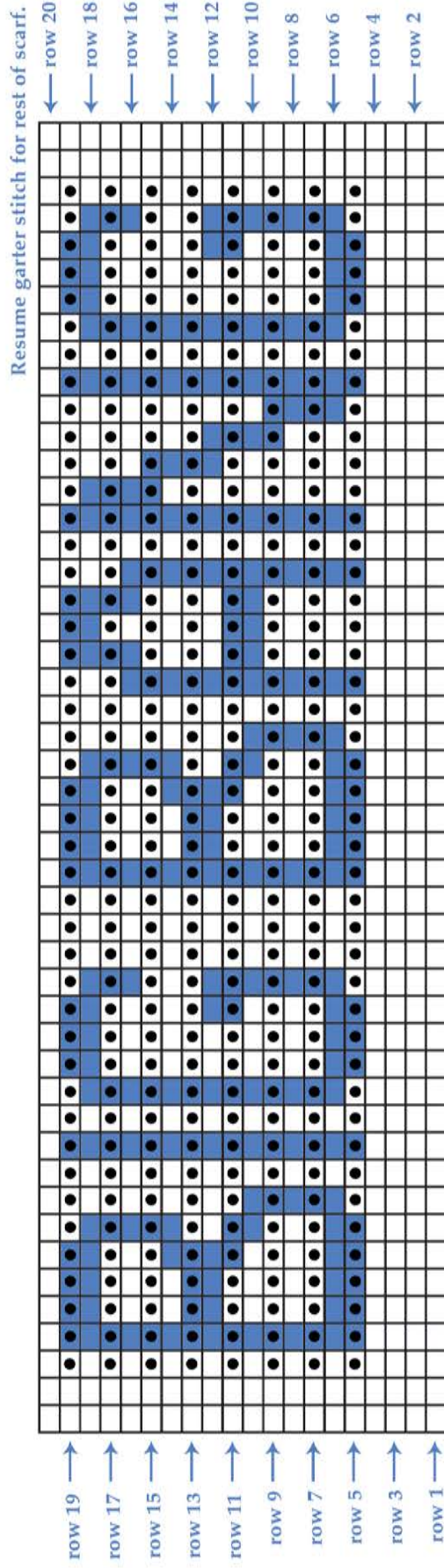
Our patterns are free to registered users who download them from LeafcutterDesigns.com. Our patterns and kits cannot be reproduced or sold without our permission. Please contact us for more information regarding licenses and partnerships.



COLOR MEANING	WHEN TO USE
ALL OF TIME	● CAST ON & BACKGROUND
THE BIG BANG	● TEXT BLOCK, ROWS 5-19
THE MILKY WAY FORMS	○ ROWS 146-147
OUR SUN IS BORN	● ROWS 486-487
PLANET EARTH FORMS	● ROWS 516-517
LIFE APPEARS ON EARTH	● ROWS 540-541
PHOTOSYNTHESIS BEGINS	● ROWS 548-549
OXYGEN IN ATMOSPHERE	● ROWS 596-597
EUKARYOTIC LIFE	● ROWS 624-625
SEXUAL REPRODUCTION	● ROWS 664-665
MULTICELLULAR LIFE	● ROWS 676-677
CAMBRIAN EXPLOSION	● ROWS 700-701
LIFE MOVES ONTO LAND	● ROWS 706-707
VERTEBRATES TAKE FLIGHT	● ROWS 716-717
FLOWERS APPEAR	● ROWS 722-723
DINOSAUR EXTINCTION	● ROWS 726-727
HUMAN BEINGS EVOLVE	● LAST 2 STS OF ROW 728 & FIRST 2 STS OF ROW 729

OPTIONAL:

Use this grid to knit the text "BIG BANG" at the beginning of your scarf.



START HERE

(This is the lower left corner of the scarf.)

A FEW TIPS:

- 1) Be sure to begin at the bottom left side of the chart.
- 2) → The arrow indicates the direction you're moving as you knit that row.
- 3) ● Purl whenever the box has a dot in it. Otherwise, always knit.
- 4) To keep track of your place, draw marker lines through the grid as you go.
- 5) If you want to learn how to do colorwork, visit KnitTheSky.com for tips and tutorials.